



CANARM P SERIES SUPPLY FAN ACCESSORIES



WALL MOUNT FANS



ACCESSORIES FOR AX & P SERIES FANS

FRONT GUARD FOR AX & P SERIES FANS

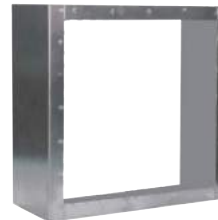
- 18 gauge galvanized 3/4" expanded metal screen, 6" deep.



FITS FAN	FRONT GUARD	WEIGHT (LBS)
8"	XFG8-10	6
10"	XFG8-10	6
12"	XFG12	6
14"	XFG14	8
16"	XFG16	9
18"	XFG18	10
20"	XFG20	10
24"	XFG24	13
30"	XFG30	TBA
36"	XFG36	TBA

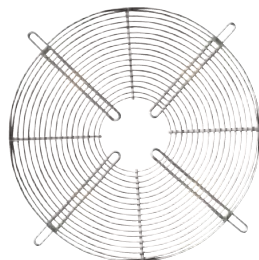
PANEL SLEEVES FOR P SERIES

- Sleeves are 9 1/2" deep.



FITS FAN	SLEEVES	WEIGHT (LBS)
8"	PSL08	14
10"	PSL10	14
12"	PSL12	14
14"	PSL14	14
16"	PSL16	14
18"	PSL18	15
20"	PSL20	19
24"	PSL24	23
30"	PSL30	26
36"	PSL36	30

REPLACEMENT GUARDS



FITS FAN	MODEL #	DESCRIPTION	WEIGHT (LBS)
8"	R-2X115	8" - 10" OSHA motor mount	3
10"	R-2X115	8" - 10" OSHA motor mount	3
12"	R-2X116	12" OSHA motor mount	3
14"	R-2X117	14" - 16" OSHA motor mount	4
16"	R-2X117	14" - 16" OSHA motor mount	4
18"	R-2X118	18" - 20" OSHA motor mount	5
20"	R-2X118	18" - 20" OSHA motor mount	5
24"	R-2X119	24" OSHA motor mount	7
30"	R-2X113	30" OSHA motor mount	8
36"	R-2X114	36" OSHA motor mount	9

MOTORIZED & GRAVITY DAMPERS FOR FRESH AIR INTAKE



MOTORIZED DAMPER

FITS FAN	MODEL #	
	MOTORIZED DAMPERS	BACK DRAFT DAMPERS
8"	SX3210X10	SR3210X10
10"	SX3210X10	SR3210X10
12"	SX3212X12	SR3212X12
14"	SX3214X14	SR3214X14
16"	SX3216X16	SR3216X16
18"	SX3218X18	SR3218X18
20"	SX3220X20	SR3220X20
24"	SX3224X24	SR3224X24
30"	SX3230X30	SR3230X30
36"	SX3236X36	SR3236X36

The Motorized dampers listed above are 110/230V.
For 24V AC, replace X with Z.



BACK DRAFT DAMPER



CANARM P SERIES SUPPLY FAN ACCESSORIES



P12-1RS9M1115
FAN SHOWN COMPLETE WITH SLEEVE AND MOTORIZED DAMPER.

WHP HOODS



- For AX fans.
- Shipped fully assembled.
- 18 gauge galvanized weather hoods complete with bird screen.
- Optional insect screen available. Consult factory.
- For Panel fans.

HOOD MODEL	DIMENSIONS	APPROX. WEIGHT (LBS)	FANS THAT WILL FIT
	INSIDE DIMENSIONS		
WHP HOODS			
WH8-10P	14.45"W x 14.45"H	20	P08 / P 10
WH12P	17.40"W X 17.40"H	16	P 12
WH14P	19.20"W X 19.20"H	24	P 14
WH16P	21.20"W X 21.20"H	26	P 16
WH18P	23.20"W X 23.20"H	29	P 18
WH20P	25.20"W X 25.20"H	44	P 20
WH24P	29.15"W X 29.15"H	44	P 24
WH30P	35.65"W X 35.65"H	60	P 30
WH36P	41.65"W X 4 1.65"H	77	P 36