

VENTS-US - TT SERIES- INLINE FAN SPECIFICATION SHEET



INSTALLATION GUIDE

INLINE MIXED-FLOW FANS

TT 100/125/150/200/250/315



INSTALLATION

Tools required



Pencil



Drill



Screwdriver



Dowel (4 pcs.)

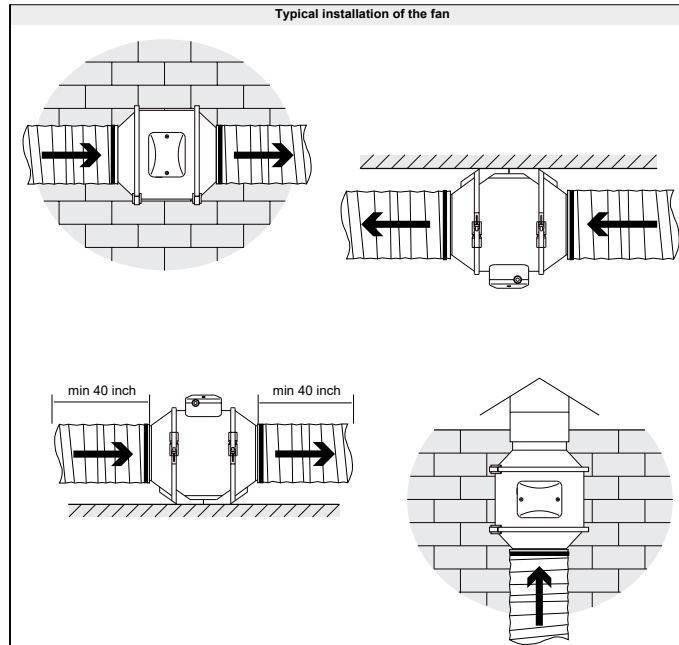


Screws (4 pcs.)

MOUNTING

Fans may be mounted either vertically or horizontally. An air duct at least 40 inches long should be connected to an inlet flange in case of horizontal fan mounting; a canopy should be installed on an inlet flange in case of vertical mounting. Outlet flange should always be connected to an air duct.

Typical installation of the fan



Vents-US
400 Murray Road, Cincinnati, OH 45217, USA
Tel: 1-888-640-0925, 513-583-5786, Fax: 513-268-4597
E-mail: support@ventsus.com

www.vents-us.com

MIU_05EN-01



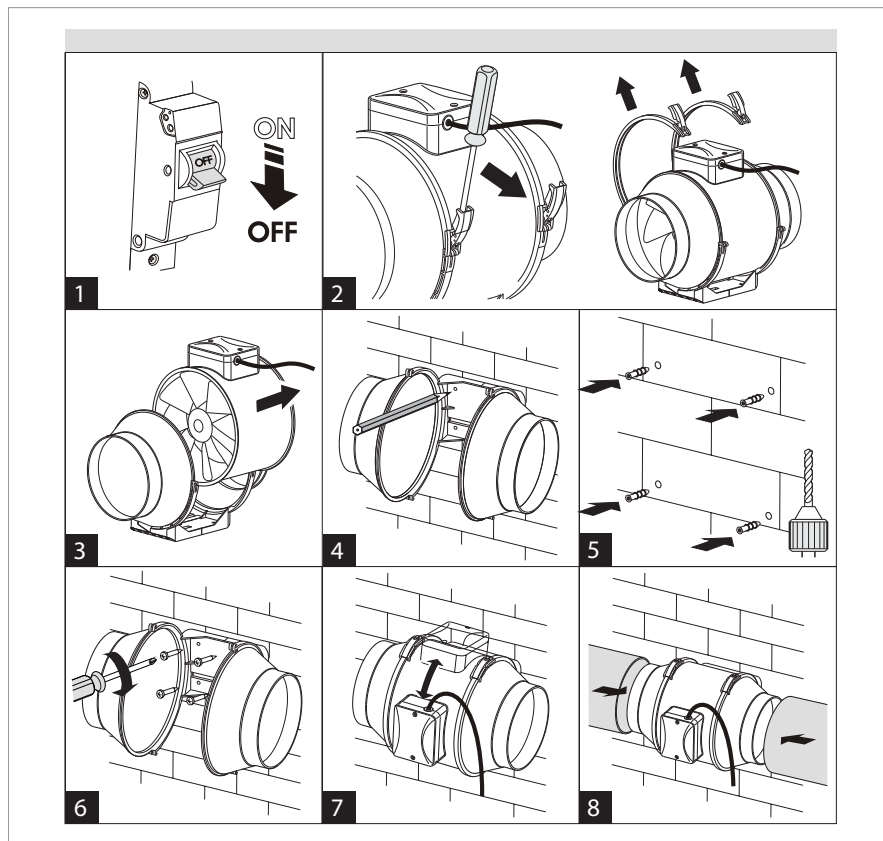
#2 Chootoo Road, South Aranguez, San Juan, Trinidad



VENTS-US - TT SERIES- INLINE FAN SPECIFICATION SHEET



- 1) Disconnect the fan from power supply.
- 2) Deinstall the fixing brackets.
- 3) Remove the fan from the casing.
- 4) Mark holes on the wall.
- 5) Drill the holes and insert the expansion anchors.
- 6) Fix the fan.
- 7) Install the fan into the casing
- 8) Connect air ducts



Vents-US
400 Murray Road, Cincinnati, OH 45217, USA
Tel: 1-888-640-0925, 513-583-5786, Fax: 513-268-4597
E-mail: support@ventsus.com

MIU_05EN-01



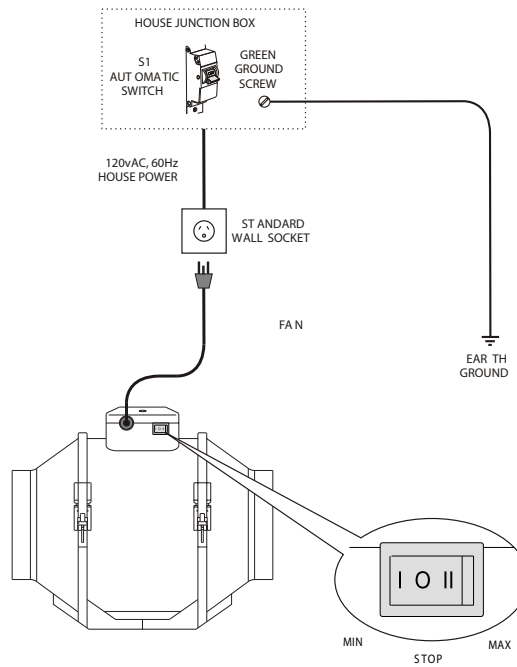
#2 Chootoo Road, South Aranguez, San Juan, Trinidad



VENTS-US - TT SERIES- INLINE FAN SPECIFICATION SHEET



Connection of the fan and standard wall socket



Vents-US
400 Murray Road, Cincinnati, OH 45217, USA
Tel: 1-888-640-0925, 513-583-5786, Fax: 513-268-4597
E-mail: support@ventsus.com

www.vents-us.com

MIU_05EN-01