



CANARM BPT SERIES EXHAUST FANS SUBMITTAL SHEET



DUCT VENTILATION

BPT SERIES BATHROOM EXHAUST FANS

- Canarm BPT series bathroom ventilators are high quality, low noise units which meet the needs of today's quality builders and contractors.
- With CFM ratings of 70, 110 and 150, we have units to meet every size bathroom.
- All Canarm BPT series bathroom fans are EnergyStar and HVI certified for energy efficiency, CFM and low sones.

BPT12-13H

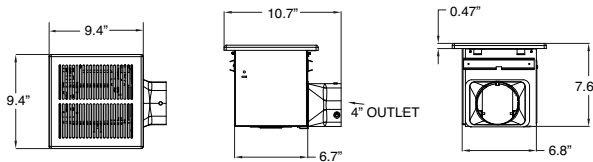
FOR BATHROOM SIZE UP TO 75 FT²



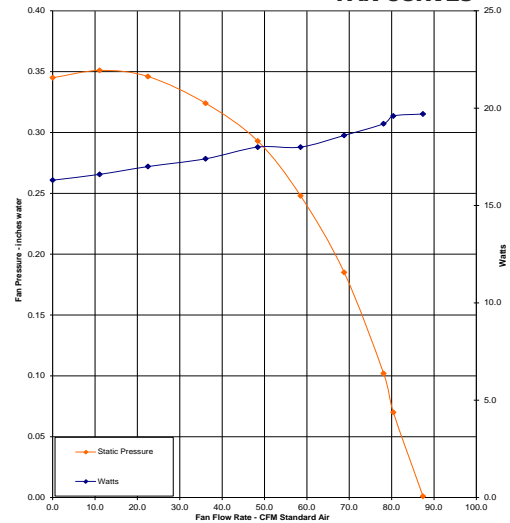
- 70 CFM
- 1 sone
- 17 Watts
- 120 V Motor
- 4" outlet
- Comes with plastic grill
- Shipping weight: 8.0 lbs.



DIMENSIONS



FAN CURVES



BPT18-34A-1

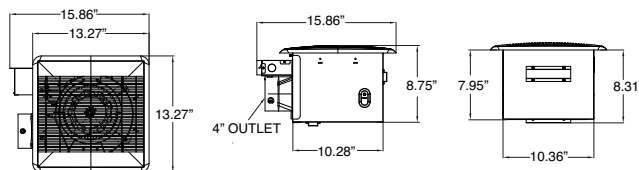
FOR BATHROOM SIZE UP TO 105 FT²



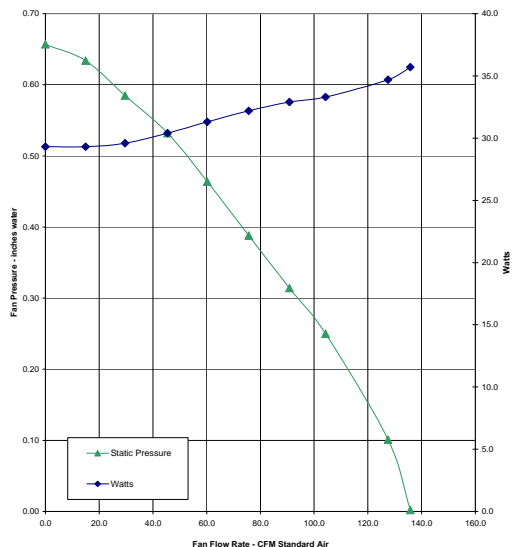
- 110 CFM
- 1 sone
- 31 Watts
- 120 V Motor
- 4" outlet
- Comes with plastic grill
- Shipping weight: 13.9 lbs.



DIMENSIONS



FAN CURVES





CANARM BPT SERIES EXHAUST FANS SUBMITTAL SHEET



DUCT VENTILATION

BPT SERIES BATHROOM EXHAUST FANS

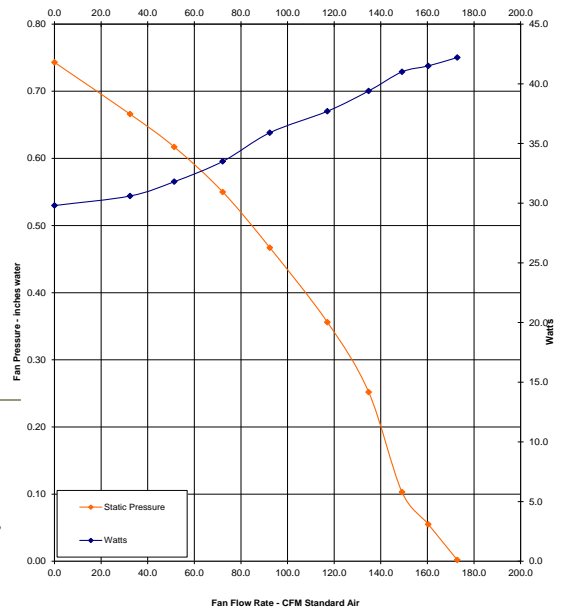
BPT18-54A-1

FOR BATHROOM SIZE UP TO 200 FT²

FAN CURVES



- 150 CFM
- 1.5 sone
- 42 Watts
- 120 V Motor
- 6" outlet
- Comes with plastic grill
- Shipping weight: 15.7 lbs.



DIMENSIONS

